



Rayat Shikshan Sanstha's

KARMAVEER BHURAO PATIL MAHAVIDYALAYA,

PANDHARPUR

(AUTONOMOUS)

DIST. SOLAPUR .- 413304 .

(Autonomous College Affiliated to PAH Solapur University, Solapur)

**FEED BACK REPORT
ON
OVERALL INSTITUTIONAL PERFORMANCE**

OF

THE ACADEMIC YEAR

2020-21

PREAMBLE:


The Student's feedback on overall institutional performance by On-line mode was carried at the end of the academic year 2020-21.. The College has designed a feedback form on Institutional performance. Students expressed their personal opinions about institution in given form. The questionnaire in the form is based on provided facilities in the college such as drinking water, washroom and its cleanliness, canteen and its cleanliness, dust bins, IT services (WiFi, Computer lab, ICT enabled classrooms), play ground with the facilities of indoor and outdoor games, library, like placement and career guidance cell, competitive examination guidance center etc. Feedback committee collected feedback forms from the students. Analysis of the feedback forms and preparation of report was carried out by Feedback Committee and Internal Quality Assurance Cell. This report is prepared on the basis of students' opinions mentioned in the survey. Findings of the report have been incorporated in the annual planning of the academic year 2020-21.



**Chairman
Feedback Committee**



**Coordinator
IQAC**



**Principal
K. B. P. Mahavidyalaya
Pandharpur**



CONTENT

Sr.No.	Particular
1.	Nature of Feedback Form
2.	Facility of Drinking Water
3.	Facility of Washroom and its Cleanliness
4.	Facility of Canteen
5.	Facility of Dust bins
6	IT services (WiFi, Computer Labs, and ICT Enabled Classrooms
7.	Playground with facility of Indoor and Outdoor Games
8.	Library
9.	Hostels- Girls and Boys
10.	Competitive Examination Guidance Center
11.	Placement and Career Guidance Cell
12.	Counselling, Women Empowerment And Grievance Redressal Cell

Nature of Feedback Form

Rayat Shikshan Sanstha's

KARMAVEER BHAURAO PATIL MAHAVIDYALAYA, PANDHARPUR

Student Feedback on Overall Institutional Performance

Name of the Student: _____ Class: _____ Year: _____

Instruction: Tick (✓) on appropriate option and write your suggestions (If any).

1. Do you like facility of drinking water on the campus?
a. Yes b. No
2. Do you have sufficient washrooms on the campus?
a. Yes b. No
3. If yes, comment on its cleanliness.
a. Good b. Satisfactory c. Poor
4. Do you have a canteen on the college campus?
a. Yes b. No
5. Comment on cleanliness on the campus.
a. Good b. Satisfactory c. Poor
6. Does your campus have dust bins?
a. Yes b. No
7. Do you avail the IT services provided by the college?
a. Yes b. No
8. If yes, mention these services with remark.

▪ Wi-Fi	a. Good	b. Satisfactory	c. Poor
▪ Computer lab/Language lab	a. Good	b. satisfactory	c. Poor
▪ ICT enabled classrooms	a. Good	b. Satisfactory	c. Poor
9. Does the college have playground?
a. Yes b. No
10. Comment on facilities for indoor and outdoor sports?
a. Good b. Satisfactory c. Poor
11. Do you get the facility of counseling?
a. Yes b. No
12. Which of the following Cells/Centers are available in the college?
 - a. Placement cell
 - b. Career guidance cell
 - c. Women empowerment cell
 - d. Grievance redressal cell
 - e. Competitive examination guidance center

13. Do you get the facilities of Library?

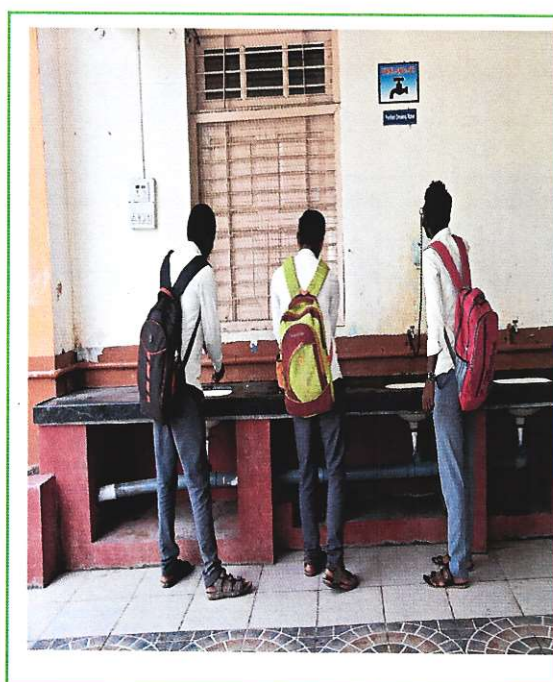
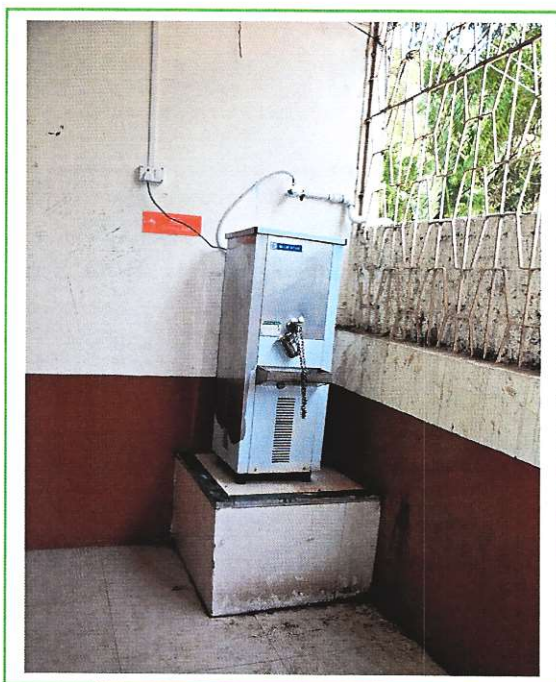
- a. Yes b. No

14. Any suggestions:

Signature of Student

1. Facility of Drinking water:

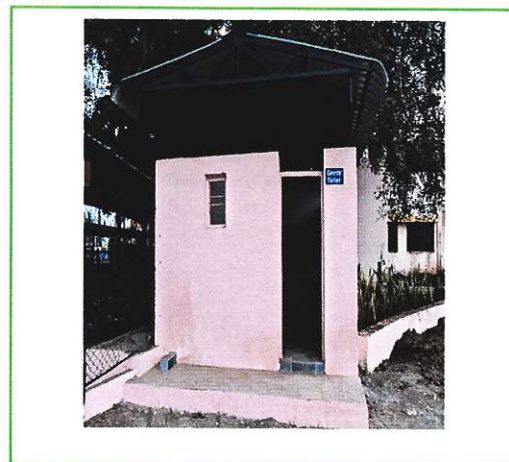
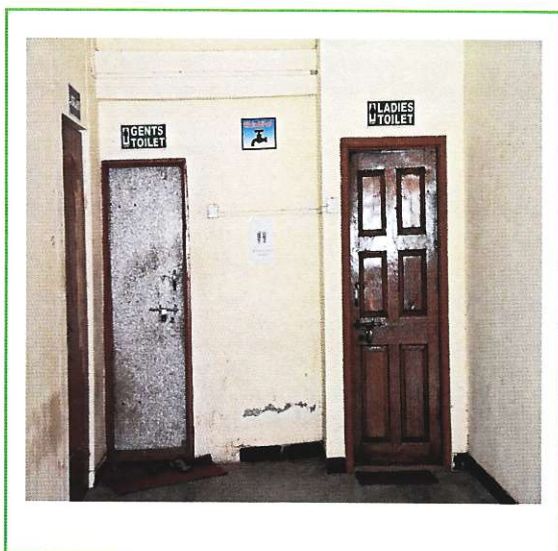
College provides pure drinking water to all stakeholders. In campus, there are ten RO drinking water plants. These are installed in A, C and D wings of the institution. These plants are also installed in Library, Hostel (Boys and Girls), Competitive examination guidance center, Common rooms, and in the Gymkhana. Pure and filtered water is provided by such RO plants. It is regularly checked and maintained by college.



Five hundred and fifty seven students participated in the survey. **539** students are satisfied with facility of drinking water given by college. Glasses are made available at every RO plant, but still some students want more glasses.

2. Facility of Washroom:

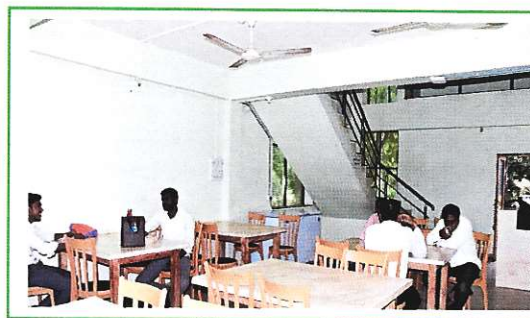
College has sufficient washrooms with toilet blocks for boys and girl students. For the boys, block of washroom is available in B and C wings, gymkhana, competitive examination guidance center and library and also in the premises of playground. For the girl students, block of washroom facility is available in common ladies room, competitive examination guidance center, girl's hostel and also in the library. These blocks are regularly cleaned and maintained by sweepers appointed by college.



Five hundred and fifty seven students have participated in the survey. Out of them, **529** students agree with the statement that college has sufficient washroom and **28** students want more number of washrooms in the college. Committee has collected the feedback from the same students regarding its cleanliness. **407** students commented good, **121** commented satisfactory while **29** students gave poor remarks.

3. Facility of Canteen:

College has a well-furnished canteen in the premises. Total carpet area of canteen is 1460.98 Sq.ft. In the ground floor, there is a well-furnished kitchen. Seating arrangement for students is available on ground as well as on the first floor. The campus of canteen is under the surveillance of CCTV camera. Tea, Coffee, Fresh dishes of breakfast and lunch are provided in canteen. College has canteen committee which regularly monitors the cleanliness in the kitchen and in all the parts of canteen.



Five hundred and fifty seven students have participated in the survey. **542** students agree with the statement that college has canteen in college campus. During survey, **481** students commented on the good cleanliness of canteen. Out of it, **68** students are satisfied with the services provided by canteen. **08** students expressed their demand of more cleanliness in the canteen.

4. Facility of Dust Bin:

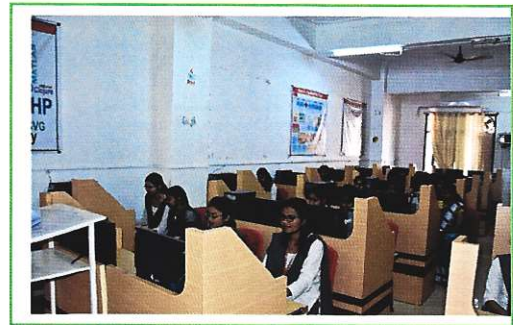
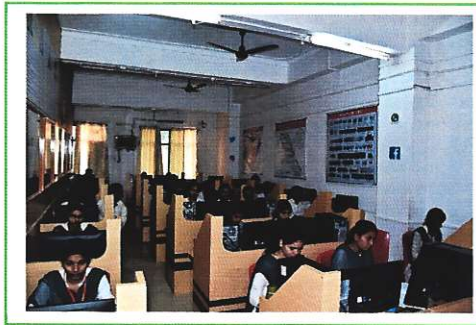
College campus has dust bins. These are kept at appropriate places for waste management. Campus supervision committee gives directions to students regarding waste management. Generally, students throw their educational waste material like papers, refills and pens etc. in these bins. Weekly, waste products from dust bins are collected by support staff of the college.



Five hundred and fifty seven students have participated in the survey. Out of it, **532** students have satisfied with facility of dust bins but **25** students commented to increase the number of dust bins in the campus.

5. Facility of IT services:

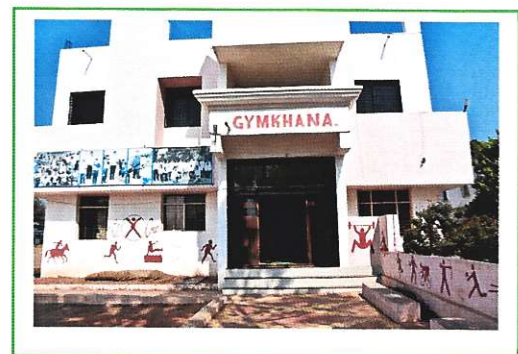
College has adequate IT infrastructure essential for the academic and administrative process. The bandwidth of internet is 50 MBPS. College provides IT services in the form computer and language laboratories with internet facility. The College has ICT enabled classroom and laboratories for the students.



Five hundred and fifty seven students have participated in the survey. Out of them, **484** students agree with the statement that college has provide IT services and **73** students demands more for IT service facilities. Students Out of them, **386** are commented on good service,**128** satisfied with the services given by the college. **43** students registered their demand of providing more IT facilities by the college. Some students wants free Wi-Fi connectivity from the college.

6. Facility of Playground and Gymkhana:

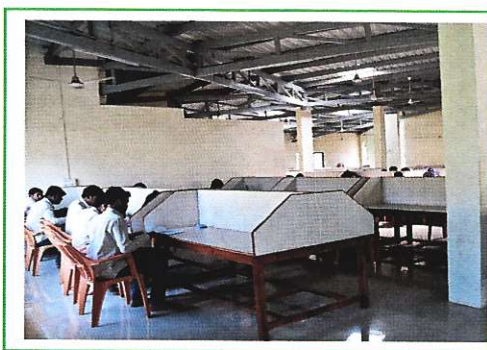
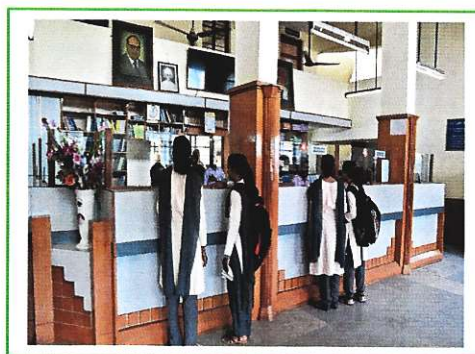
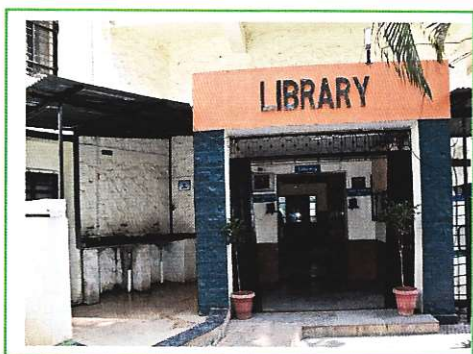
College has big playground with 8 lanes 400 meters running track, court of volley ball, basketball, cricket pitch. There is a well-equipped gymnasium. The carpet area of gymkhana is 3393.00 sq.ft. This offers facility for indoor games like Table tennis, Chess, Wrestling, Judo, Taekwondo, Boxing, Best physique, Weight lifting etc.



557 students have participated in the survey. Out of them, **552** students agree with the statement that college has play ground . Out of them, **472** are comment on good facilities **80** satisfied with the facilities of indoor and outdoor games. Only **05** students are not satisfied by the sport facilities.

7. Facility of Library

College has fully automated Library with Libreria software. The carpet area of the library is 9586 sq.ft. It has separate dynamic website and subscription to N-List and DELNET online platforms. Library provides internet service, book bank and reading room facility, periodicals, old question paper banks and open access for PG students. Library has Braille system for Divyangjan (Visually Impaired) and the Information Kiosk system for all students.



Total **557** students have participated in the survey. Out of them, **553** are satisfied with the services provided by the library. **04** students expect more services from the library. Some students require books of other subjects also.

8. Facility of Hostel

College has spacious hostels for boys as well as for girl students. There are two hostels for the girls and one for the boys. Total carpet area of boys' hostel is 10336.37 sq.ft. whereas girls hostel (old building) is 19444.57 sq.ft. and girls hostel (new building) is 11698.22 sq.ft. Hostel has all necessary facilities for the students like lodging with

furnished rooms, mess with dining hall, RO facility and water for domestic purpose, safety and security.



9. Competitive examination guidance center:

The College has competitive examination guidance center. In the year 2019-20, one hundred and one students have been enrolled in this center. This center has a separate library, reading room and internet facility. Regular lectures are conducted in the center.



student have participated in the survey. All are satisfied with the facilities provided in the competitive examination guidance center.

10. Other facilities:

Students have commented on other facilities provided by the college like placement cell, career guidance cell, women empowerment and grievance redressal cell. **482** students have commented on placement cell, out of which, few students want separate display board for paper cuttings of employment news. **447** student have commented on career guidance. **312** students commented on women empowerment and grievance redressal cell, out of which few girl students demanded Certificate Course in Women Empowerment and **185** students commented on grievance redressal cell. **495** student have commented on competitive exam center.