



Rayat Shikshan Sanstha's

**KARMAVEER BHAURAO PATIL MAHAVIDYALAYA,
PANDHARPUR**

(AUTONOMOUS)

DIST. SOLAPUR .- 413304 .

(Autonomous College Affiliated to PAH Solapur University, Solapur)

**FEEDBACK REPORT
ON
OVERALL INSTITUTIONAL PERFORMANCE
(Online)**

OF

THE ACADEMIC YEAR

2021-22

PREAMBLE:

The Student's feedback on overall institutional performance by On-line mode was carried at the end of the academic year 2021-22. The College has designed a feedback form on Institutional performance. Students expressed their personal opinions about institution in given form. The questionnaire in the form is based on provided facilities in the college such as drinking water, washroom and its cleanliness, canteen and its cleanliness, dust bins, IT services (WiFi, Computer lab, ICT enabled classrooms), playground with the facilities of indoor and outdoor games, library, placement and career guidance cell, women empowerment, Grievance redressal cell competitive examination guidance center etc.

Feedback committee collected feedback forms from the students. Analysis of the feedback forms and preparation of report was carried out by Feedback Committee and Internal Quality Assurance Cell. This report is prepared on the basis of students' opinions mentioned in the survey. Findings of the report have been incorporated in the annual planning of the academic year 2022-23.



**Chairman
Feedback Committee**



**Coordinator
IQAC**



**Principal
K. B. P. Mahavidyalaya,
Pandharpur (Autonomous)**



CONTENT

Sr. No.	Particular
1.	Nature of Feedback Form
2.	Facility of Drinking Water
3.	Facility of Washroom and its Cleanliness
4.	Facility of Canteen
5.	Facility of Dust bins
6.	IT services (Wi-Fi, Computer Labs, and ICT Enabled Classrooms)
7.	Playground with facility of Indoor and Outdoor Games
8.	Library
9.	Hostels- Girls and Boys
10.	Competitive Examination Guidance Center
11.	Placement and Career Guidance Cell
12.	Counselling, Women Empowerment And Grievance Redressal Cell

Nature of Feedback Form

Rayat Shikshan Sanstha's

KARMAVEER BHAURAO PATIL MAHAVIDYALAYA, PANDHARPUR

Student Feedback on Overall Institutional Performance

Name of the Student: _____ Class: _____ Year: _____

Instruction: Tick (✓) on appropriate option and write your suggestions (If any).

1. Do you like facility of drinking water on the campus?
a. Yes b. No
2. Do you have sufficient washrooms on the campus?
a. Yes b. No
3. If yes, comment on its cleanliness.
a. Good b. Satisfactory c. Poor
4. Do you have a canteen on the college campus?
a. Yes b. No
5. Comment on cleanliness on the campus.
a. Good b. Satisfactory c. Poor
6. Does your campus have dust bins?
a. Yes b. No
7. Do you avail the IT services provided by the college?
a. Yes b. No
8. If yes, mention these services with remark.

▪ Wi-Fi	a. Good	b. Satisfactory	c. Poor
▪ Computer lab/Language lab	a. Good	b. satisfactory	c. Poor
▪ ICT enabled classrooms	a. Good	b. Satisfactory	c. Poor
9. Does the college have playground?
a. Yes b. No
10. Comment on facilities for indoor and outdoor sports?
a. Good b. Satisfactory c. Poor
11. Do you get the facility of counseling?
a. Yes b. No
12. Which of the following Cells/Centers are available in the college?
 - a. Placement cell
 - b. Career guidance cell
 - c. Women empowerment cell
 - d. Grievance redressal cell
 - e. Competitive examination guidance center

13. Do you get the facilities of Library?

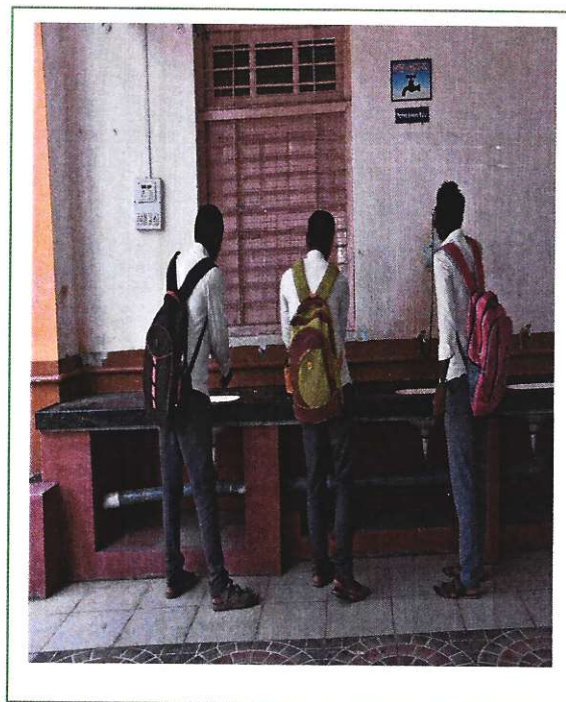
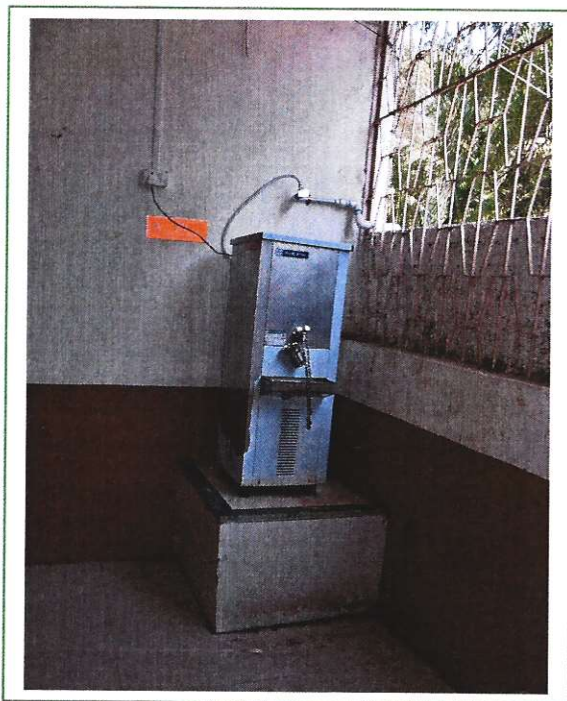
- a. Yes b. No

14. Any suggestions:

Signature of Student

1. Facility of Drinking water:

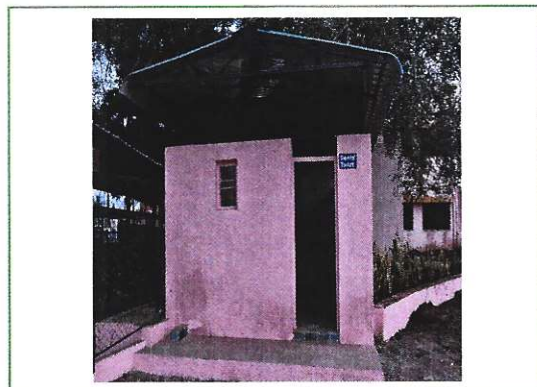
College provides pure drinking water to all stakeholders. In campus, there are ten RO drinking water plants. These are installed in A, C and D wings of the institution. These plants are also installed in Library, Hostel (Boys and Girls), Competitive examination guidance center, Common rooms, and in the Gymkhana. Pure and filtered water is provided by such RO plants. It is regularly checked and maintained by college.



Two hundred and eighty four students participated in the survey. **262** students are satisfied with facility of drinking water given by college. Glasses are made available at every RO plant, but still some students want more RO Plants.

2. Facility of Washroom:

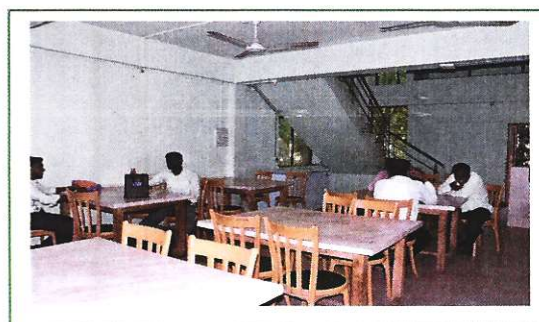
College has sufficient washrooms with toilet blocks for boys and girl's students. For the boys, block of washroom are available in B and C wings, gymkhana, competitive examination guidance center and library and also in the premises of playground. For the girl's students, block of washroom facility is available in common ladies room, competitive examination guidance center, girl's hostel and also in the library. These blocks are regularly cleaned and maintained by sweepers appointed by college.



Two hundred and eighty four students have participated in the survey. Out of them, **241** students agree with the statement that college has sufficient washroom and **43** students want more number of washrooms in the college. Committee has collected the feedback from the same students regarding its cleanliness. **189** students commented good remark, **66** commented satisfactory remark while **29** students gave poor remarks.

3. Facility of Canteen:

College has a well-furnished canteen in the premises. Total carpet area of canteen is 1460.98 Sq.ft. In the ground floor, there is a well-furnished kitchen. Seating arrangement for students is available on ground as well as on the first floor. The campus of canteen is under the surveillance of CCTV camera. Tea, Coffee, Fresh dishes of breakfast and lunch are provided in canteen. College has canteen committee which regularly monitors the cleanliness in the kitchen and in all the parts of canteen.

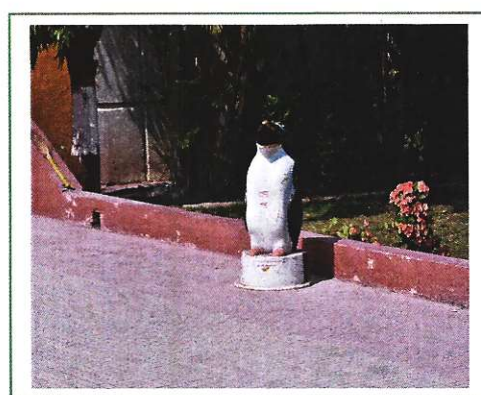


Two hundred and eighty four students have participated in the survey. **262** students agree with the statement that college has canteen in college campus. During survey, **205** students

commented on the good cleanliness of canteen. Out of it, **63** students are satisfied with the services provided by canteen. **16** students expressed their demand of more cleanliness in the canteen.

4. Facility of Dust Bin:

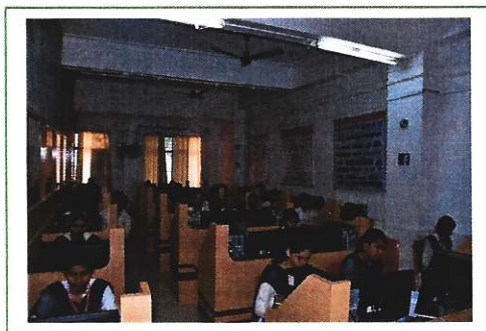
College campus has dust bins. These are kept at appropriate places for waste management. Campus supervision committee gives directions to students regarding waste management. Generally, students throw their educational waste material like papers, refills and pens etc. in these bins. Weekly, waste products from dust bins are collected by support staff of the college.



Two hundred and eighty four students have participated in the survey. Out of it, **264** students have satisfied with facility of dust bins but **20** students commented to increase the number of dust bins in the campus.

5. Facility of IT services:

College has adequate IT infrastructure essential for the academic and administrative process. The bandwidth of internet is 50 MBPS. College provides IT services in the form computer and language laboratories with internet facility. The College has ICT enabled classroom and laboratories for the students.



TUTIONA

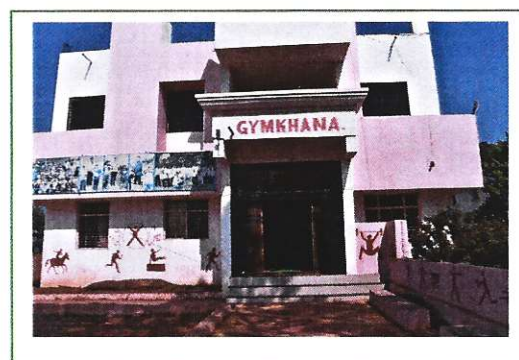
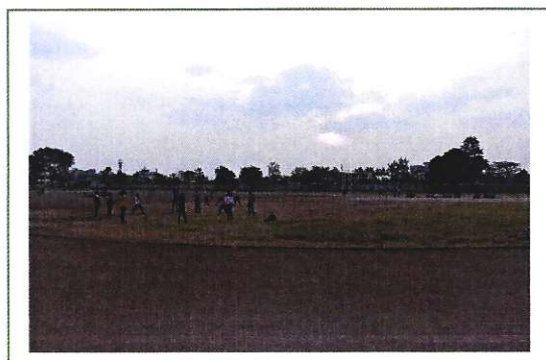
8

Two hundred and eighty four students have participated in the survey. Out of them, **215** students agree with the statement that college provides IT services and **69** student's demands more for IT service facilities. **175** students commented good remark on Wi-Fi service, **60** are satisfied with Wi-Fi services given by the college. **49** students registered their demand of providing more Wi-Fi facilities by the college. Some students wants free Wi-Fi connectivity from the college.

204 students commented good remark on computer lab, **52** are satisfied with computer lab services given by the college. **28** students registered their demand of providing more Wi-Fi facilities by the college.

6. Facility of Playground and Gymkhana:

College has big playground with 8 lanes 400 meters running track, court of volley ball, basketball, cricket pitch. There is a well-equipped gymnasium. The carpet area of gymkhana is 3393.00 sq.ft. It offers facility for indoor games like Table tennis, Chess, Wrestling, Judo, Taekwondo, Boxing, Best physique, Weight lifting etc.

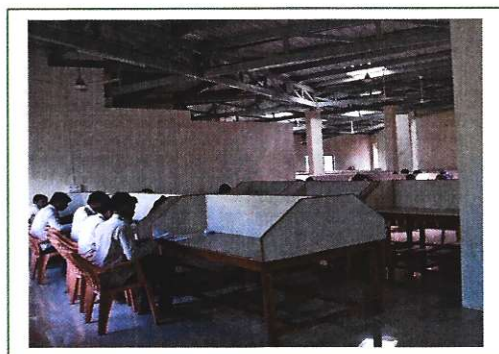
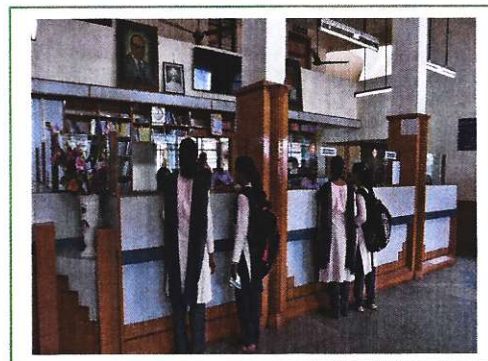
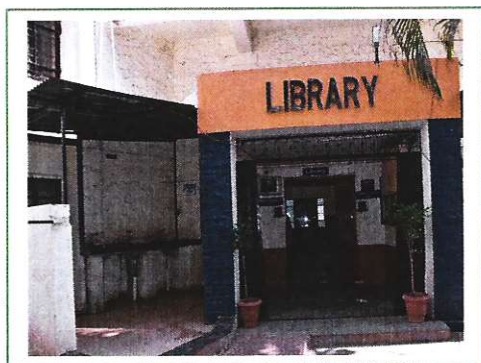


284 students have participated in the survey. All students agree with the statement that college has playground. Out of them, **217** are comment on good facilities 43 satisfied with the facilities of indoor and outdoor games. Only **24** students are not satisfied by the sport facilities.

7. Facility of Library

College has fully automated Library with **Libreria software**. The carpet area of the library is 9586 sq.ft. It has separate dynamic website and subscription to N-List and

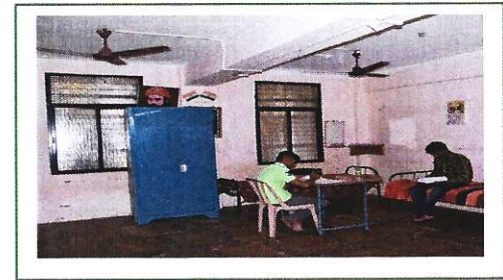
DELNET online platforms. Library provides internet service, book bank and reading room facility, periodicals, old question paper banks and open access for PG students. Library has Braille system for Divyangjan (Visually Impaired) and the Information Kiosk system for all students.



Total **284** students have participated in the survey. Out of them, **262** are satisfied with the services provided by the library. **22** students expect more services from the library. Some students require books of other subjects also.

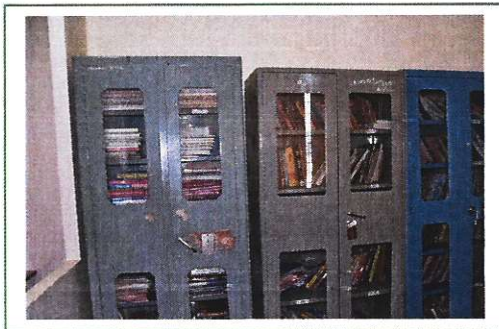
8. Facility of Hostel

College has spacious hostels for boys as well as for girl students. There are two hostels for the girls and one for the boys. Total carpet area of boys' hostel is 10336.37 sq.ft. Whereas girls hostel (old building) is 19444.57 sq.ft. and girl's hostel (new building) is 11698.22 sq.ft. Hostel has all necessary facilities for the students like lodging with furnished rooms, mess with dining hall, RO facility and water for domestic purpose, safety and security.



9. Competitive examination guidance center:

The College has competitive examination guidance center. This center has a separate library, reading room and internet facility. Regular lectures are conducted in the center.



Students have participated in the survey. All are satisfied with the facilities provided in the competitive examination guidance center.

10. Other facilities:

Students have commented on other facilities provided by the college like placement cell, career guidance cell, women empowerment and grievance redressal cell. **215** students have commented on placement cell, out of which, few students want separate display board for paper cuttings of employment news. **195** student have commented on career guidance. **108** students commented on women empowerment and **139** on grievance redressal cell, out of which few girl students demanded Certificate Course in Women Empowerment and **139** students commented on grievance redressal cell. **212** student have commented on competitive exam center.

Rayat Shikshan Sanstha's

Karmaveer Bhaurao Patil Mahavidyalaya, Pandharpur (Autonomous)

Analysis of Student Feedback on Overall Institutional Performance (Online) – 2021-22

Sr. No	Questions	Options	B.Com III (61)	B.Sc.III (139)	B.A.III (57)	ECS III (21)	BCA III (06)	Total (284)
1	Do you like facility of drinking water on the campus?	Yes No	55 06	127 12	54 03	20 01	06 --	262 22
2	Do you have sufficient washrooms on the campus?	Yes No	50 11	120 19	48 09	17 04	06 --	241 43
3	If yes, comment on its cleanliness.	Good Satisfactory Poor	38 16 07	93 29 17	38 16 03	15 04 02	05 01 --	189 66 29
4	Do you have a canteen on the college campus?	Yes No	55 06	129 10	54 03	18 03	06 --	262 22
5	Comment on cleanliness on the campus.	Good Satisfactory Poor	38 18 05	105 27 07	41 13 03	16 04 01	05 01 --	205 63 16
6	Does your campus have dust bins?	Yes No	57 04	130 09	51 06	20 01	06 --	264 20
7	Do you avail the IT services provided by the college?	Yes No	34 27	104 35	53 04	18 03	06 --	215 69
8	Wi-Fi service	Good	27	102	30	11	05	175
		Satisfactory Poor	11 23	27 10	15 12	06 04	01 --	60 49
8	Computer lab/Language lab	Good	39	102	41	16	06	204
		Satisfactory Poor	11 11	27 10	12 04	02 03	-- --	52 28
9	ICT enabled classrooms	Good	33	94	33	14	06	180
		Satisfactory Poor	12 16	30 15	21 04	06 01	-- --	68 36
9	Does the college have playground?	Yes	61	139	57	21	06	284
		No	--	--	--	--	--	--

10	Comment on facilities for indoor and outdoor sports?	Good Satisfactory Poor	33 12 16	114 18 06	46 11 --	18 01 02	05 01 --	217 43 24
11	Do you get the facility of counselling?	Yes No	61 00	112 27	50 07	19 02	06 --	248 36
12	Which of the following Cells/Centers are available in the college?	Placement cell Career Guid cell Women empower Grievance redressal Compi.exam guid	52 48 22 28 58	98 85 42 78 92	45 41 32 23 42	16 18 09 08 17	04 03 03 02 03	215 195 108 139 212
13	Do you get the facilities of Library?	Yes No	44 17	139 00	53 04	20 01	06 --	262 22
14	Does you stay in hostel?	Yes No	11 50	49 90	30 27	07 14	02 04	99 185
15	Quality of lodging in the hostel	Good Satisfactory Poor	10 - 01	45 04 --	28 02 --	06 01 --	02 -- --	91 07 01
	Quality of food in the hostel mess	Good Satisfactory Poor	08 03 --	42 07 --	25 05 --	05 02 --	02 -- --	82 17 --
	Facility of water	Good Satisfactory Poor	09 02 --	44 05 --	29 01 --	06 01 --	02 -- --	90 09 --
	Cleanliness in the hostel	Good Satisfactory Poor	10 01 --	40 09 --	24 05 01	05 01 01	02 -- --	81 16 02